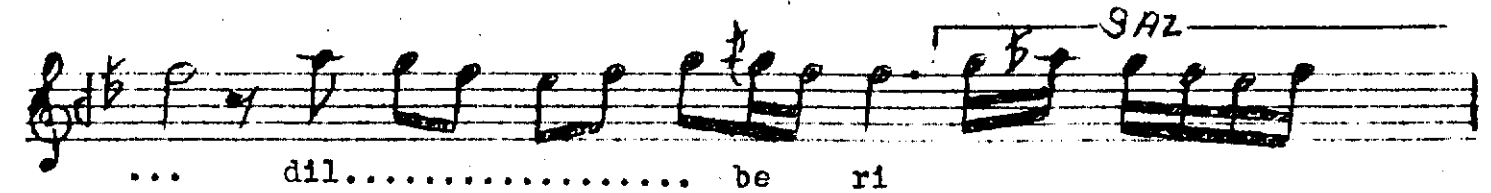
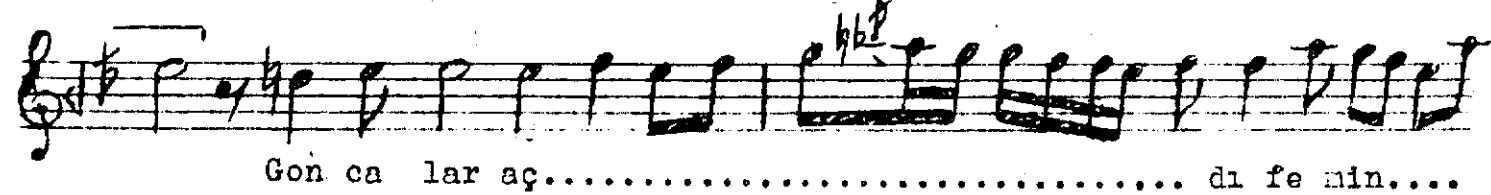
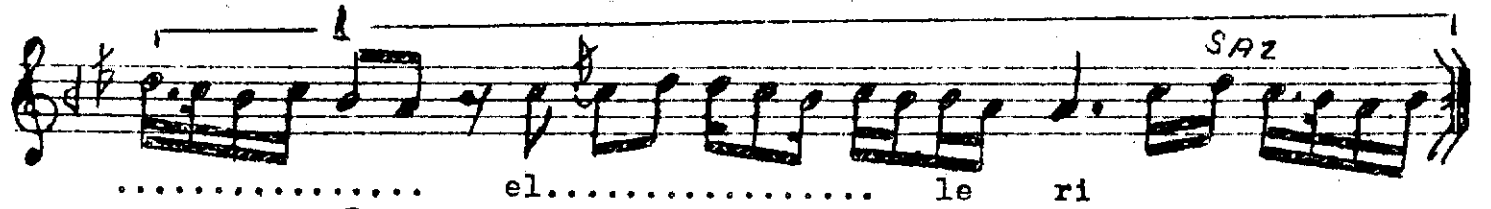
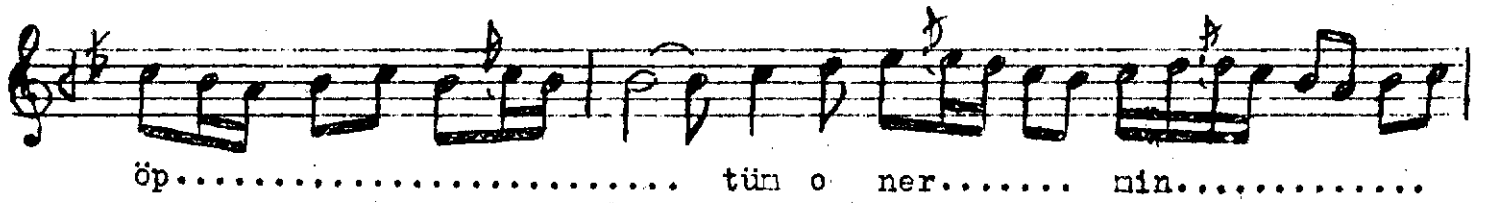
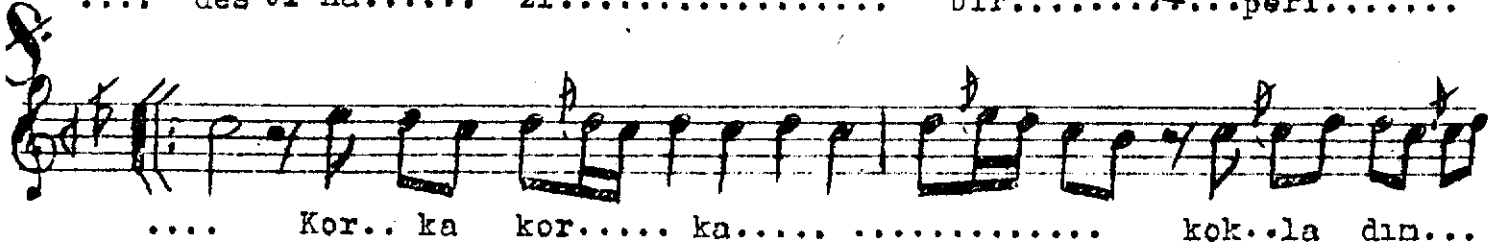


Usulü: Ağır Aksak

SABÂ ŞARKI

Beste: Binen Şen

Güfte: Mustafa Reşit  
Bey



... ib..... ti sa..... ml.....

..... dil..... be ri.....

*Aranâğmeye* SAZ

el ..... le ri

(Aranâğnesi)

1

2

242

Çamlar altındâ uzatdı dest-i nâzî bir peri  
 Korka korka kokladım öptüm o nernîn elleri  
 Goncalar açdı feninde iltisâm-î dilberi  
 Korka korka kokladım o nernîn elleri.